

## **Pine Tree Water Control District Policy Regarding Construction and Maintenance of Driveway Culverts**

### **Driveway Culverts**

The Pine Tree Water Control District (PTWCD) is responsible for drainage within the PTWCD boundaries. The minimization of impediments to the flow of water through canals and swales is a PTWCD goal. In order to accomplish this goal, the location and size of all driveway culverts across swales or canals used for drainage purposes within the Pine Tree Water Control PTWCD (PTWCD or PTWCD) must be approved by the PTWCD.

The PTWCD shall specify the culvert size. Although the PTWCD has not previously required culverts to be approved, given the PTWCD's investment in the reconstruction of culverts and the necessity to maintain the flow of water throughout the PTWCD's drainage system, PTWCD approval will be required as of October 1, 2015. This approval shall be done in conjunction with the Village of Wellington Engineering Department's review of such permits required as a part of the Village's Land Development Regulations (LDRs) and Building Code. The PTWCD may designate the Village Engineer as its agent for purposes of the PTWCD's review and approval.

Culverts must be maintained in good condition. The landowner is responsible for repairing any damage to culvert or replacing the culvert if necessary. If the PTWCD determines that a culvert is in need of repair or replacement, the PTWCD may notify the landowner of the need to make repairs or replacement. In the absence of emergency conditions the landowner will generally be given 60 days to make the repairs or replacement and bring the culvert back into good condition. If the repair or replacement is not done in a timely manner the PTWCD may initiate repairs or replacement of the damaged culvert and assess the landowner for the cost of such works.

Attached: 1) Village of Wellington Unpaved/stabilized Road Driveway Connection Detail  
2) Unpaved/Stabilized Road Driveway Connection Drawing

Effective Date: October 1, 2015

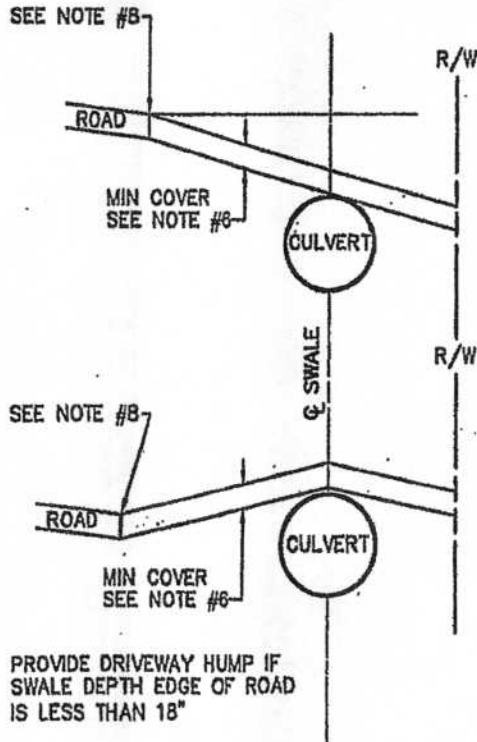
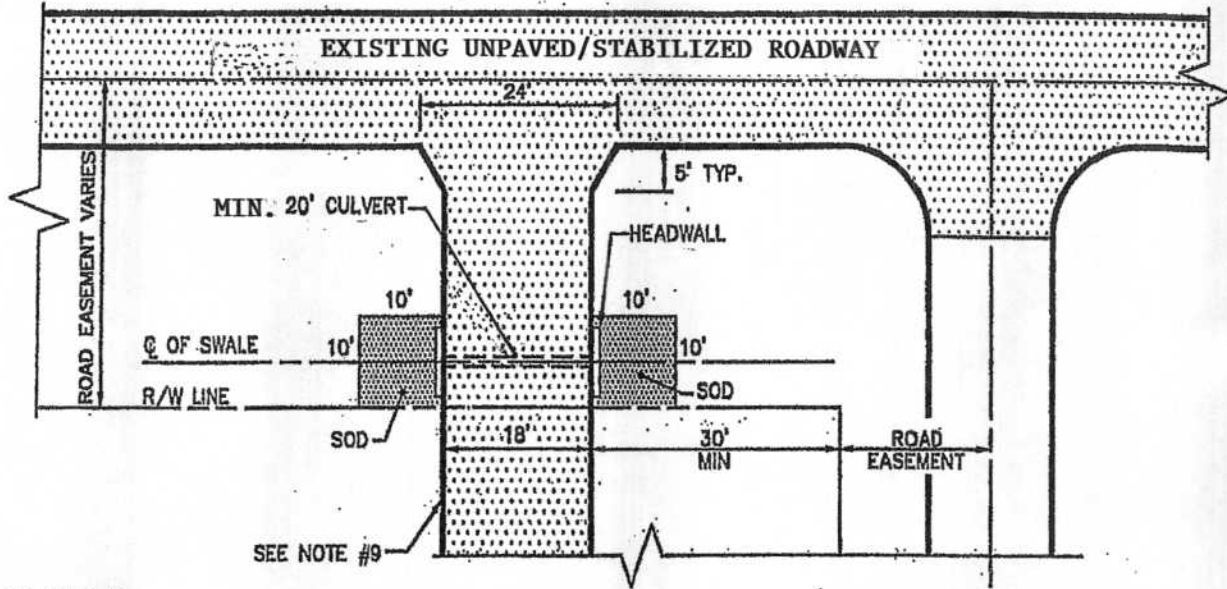
Approved: July 13, 2015 PTWCD Board Meeting



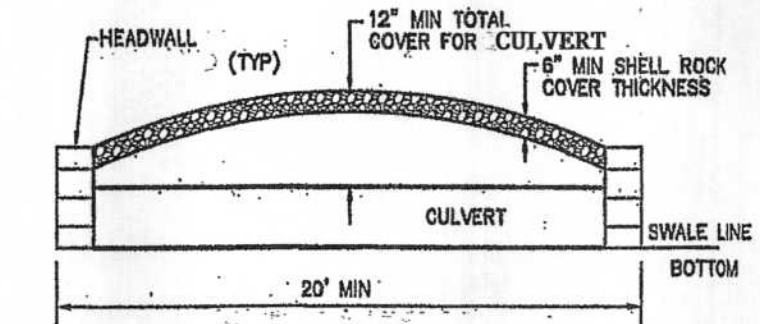
# WELLINGTON



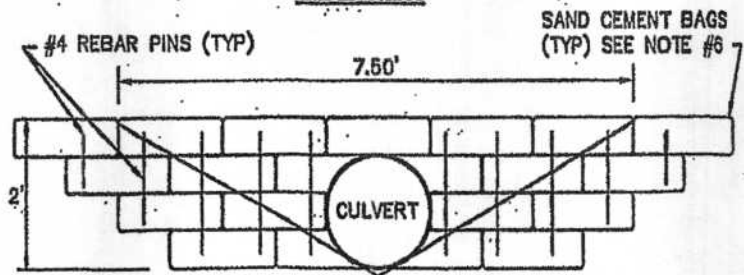
## UNPAVED/STABILIZED ROAD DRIVEWAY CONNECTION DETAIL



**TYPICAL DRIVEWAY SECTIONS**



**SIDE VIEW**



**HEADWALL DETAIL**



## **UNPAVED/STABLIZED ROAD DRIVEWAY CONNECTION DETAIL**

### **NOTES:**

- 1. CULVERT MATERIAL SHALL BE EITHER CORRUGATED METAL PIPE (CMP) 18" DIAMETER; REINFORCED CONCRETE PIPE (RCP) 15" DIAMETER; OR HIGH DENSITY POLYETHYLENE (HDPE) CORRUGATED PIPE, SMOOTH WALL 15" DIAMETER, ADS N-12 OR APPROVED EQUAL.**
- 2. CULVERT DIAMETER OR OTHER MODIFICATIONS MAY BE REQUIRED BY THE CITY. EQUIVALENT ELLIPTICAL PIPE MAY BE SUBSTITUTED FOR ROUND CULVERT.**
- 3. APPLICABLE FOR RESIDENTIAL DRIVEWAY AUTO TRAFFIC ONLY.**
- 4. SAND-CEMENT HEADWELL APPLICABLE TO CMP, RCP, & HDPE AND WHERE APPLICABLE (30-60 LB BAGS, 15 ON EACH SIDE). SAND CEMENT BAGS SHALL BE PINNED WITH #4 REBAR.**
- 5. CULVERT MAY BE OMITTED AT THE DIRECTION OF THE CITY. DRIVE SHALL MATCH SWALE GRADE.**
- 6. SHELLROCK AND FILL SHALL BE COMPACTED TO 98% MAX DRY DENSITY PER AASHTO T-180 WITH 12" MINIMUM COVER FOR CMP & HDPE AND 6" MINIMUM COVER FOR RCP.**
- 7. SLOPE FROM EDGE OF DRIVE TO SWALE BOTTOM SHALL BE 4:1.**
- 8. DRIVEWAY ELEVATION SHALL MATCH ROADWAY ELEVATION AT CONNECTION POINT.**
- 9. NO CONCRETE OR ASPHALT DRIVEWAY SURFACE ALLOWED WITHIN CITY EASEMENT WITHOUT A "PAVING WAIVER".**
- 10. SOD REQUIRED FOR EROSION, WHEREVER THERE IS BARE SOIL IN THE SWALE (SEE SOD DETAIL).**
- 11. CONTACT PUBLIC WORKS DEPARTMENT 48 HOURS PRIOR TO CULVERT INSTALLATION FOR CULVERT "STAKE OUT" (INVERT GRADE & CENTER LINE).**